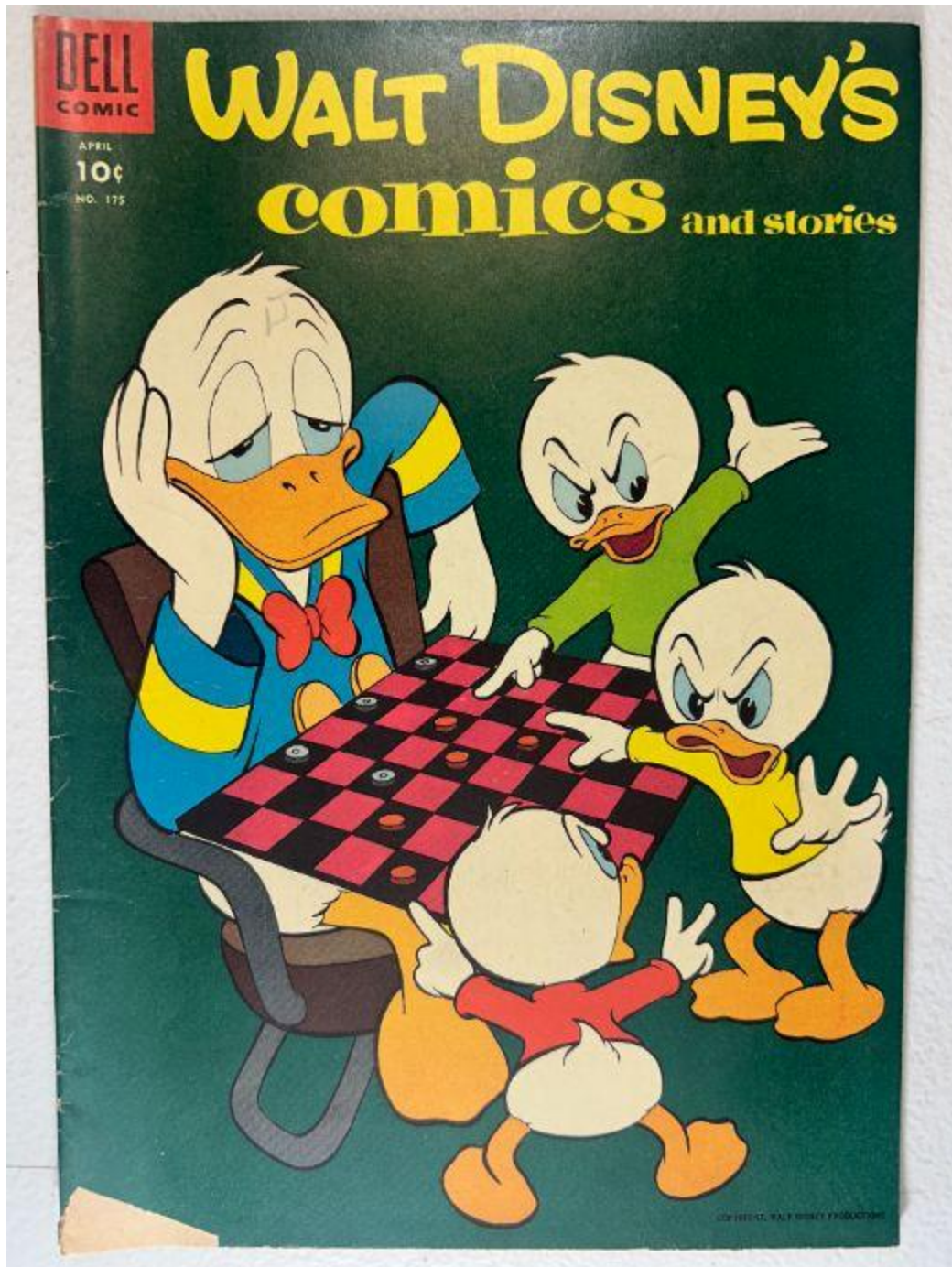


■ **Walt Disney's Comics and Stories – Vol. 15 No.7
(April 1953)**

Evaluation Date: April 3, 2026



SUMMARY OF OBSERVATIONS

This comic retains the front cover, back cover, centerfold, and all photographed interior pages. Overall presentation is visually strong, with the front cover showing vivid color saturation and retained surface gloss, and the interior pages displaying clear artwork with consistent age-related toning. The spine remains straight and continuous in overall alignment.

Condition issues are limited and localized. The front cover shows **a small, discrete area of paper loss along the lower edge**. The spine exhibits **fine vertical cracking** without long splits or separation. Both staples are present and embedded, showing **surface-level oxidation** without surrounding paper tearing or slot enlargement. Interior pages appear complete and clean, with only minor handling wear. The brittleness test image shows a **single page flexed upward**, bending with a smooth, shallow arc and no visible fiber fracture on the lifted page.

FRONT COVER — OBSERVATIONS

Walt Disney's Comics and Stories – Vol. 15 No. 7 (April 1953)

Photo Condition & Quality:

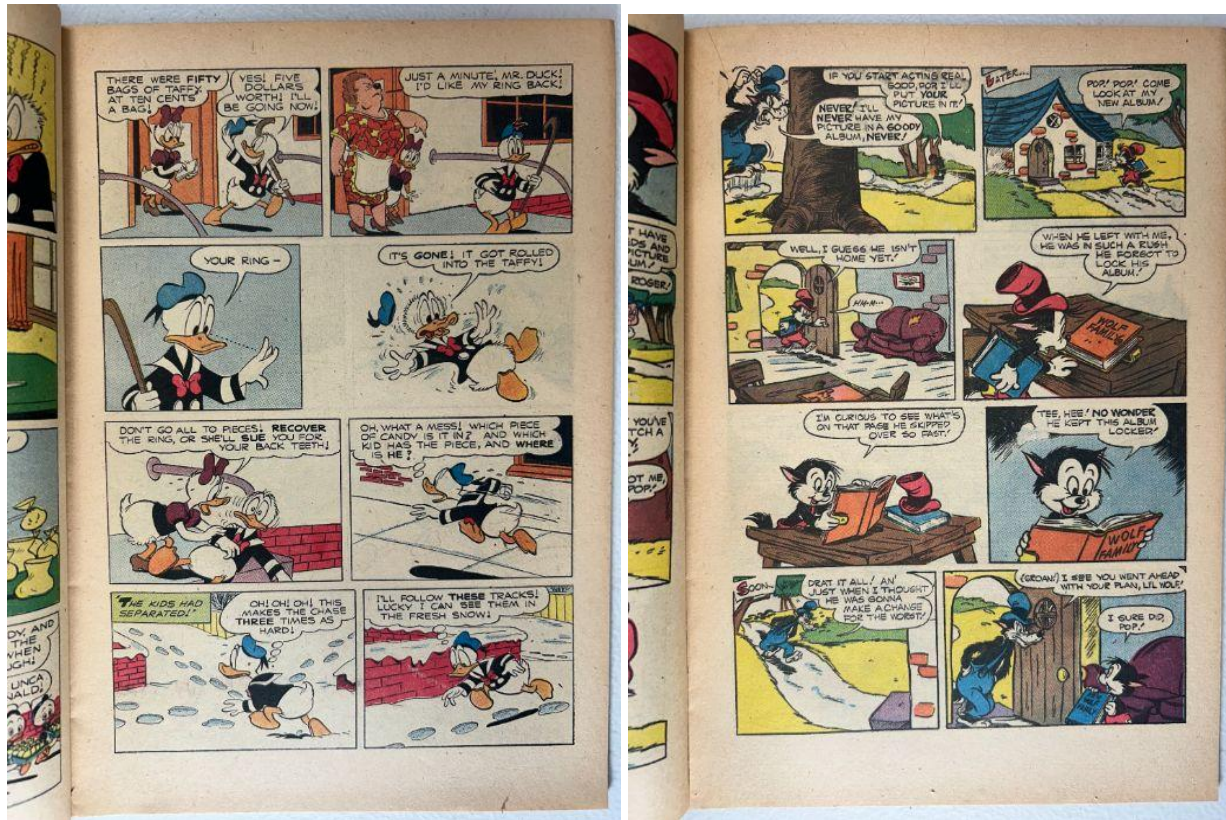
Image is sharp and evenly lit, with the full cover visible including edges, corners, and spine. No glare or obstruction; resolution is sufficient to assess surface wear and edge defects. **View shows the full front cover.**

Observations:

- Strong color saturation across the cover field.
- Surface gloss visible across the background.
- Near the **lower edge**, a **small area of paper loss** is present, measuring approximately **4–7 mm wide** and extending **~2–3 mm upward** from the edge.
- The loss shows irregular edges with exposed lighter paper fibers.
- Along the spine edge, **fine vertical cracks** are visible, each approximately **2–4 mm in length**, with openings **<1 mm wide**.
- Corner rounding present on all corners, approximately **3–5 mm** inward.
- No diagonal creases extend into the artwork field.

Overall Impression:

Front cover presents strongly with **minor localized edge loss and light spine cracking**.



Observations:

- Tan to light-tan paper coloration, darker toward outer margins and lighter near gutters.
- Colors remain clear; linework is legible.
- No interior tearing or paper loss visible on the photographed pages.
- Minor corner bends on some pages, approximately 3–5 mm inward.
- No writing, ink transfer, or moisture-related distortion observed.

Overall Impression:

Interior pages are **clean, complete, and visually strong**, with only minor handling wear.

CENTERFOLD — OBSERVATIONS

Walt Disney's Comics and Stories – Vol. 15 No. 7 (April 1953)

Photo Condition & Quality:

Image is in focus and evenly lit, clearly showing both pages and the central gutter; staple areas are unobstructed. View shows the centerfold open to the gutter.



Observations:

- Both staple positions visible and intact.
- Staple perforations remain close to original size, with no enlargement beyond **~1 mm**.
- Fold line shows light compression extending **~1–2 mm** on either side.
- No paper loss visible at the fold.

Overall Impression:

Centerfold remains **securely attached and structurally sound**.

SPINE — OBSERVATIONS

Walt Disney's Comics and Stories – Vol. 15 No. 7 (April 1953)

Photo Condition & Quality:

Image is sharp and well lit, showing the full spine length at a slight angle; no obstruction. Resolution sufficient to assess cracking and alignment.



Observations:

- Spine appears straight and continuous.
- Several **fine vertical cracks** visible, each approximately **2–4 mm** in length.
- No long splits, separation, or exposed interior page layers observed.

Overall Impression:

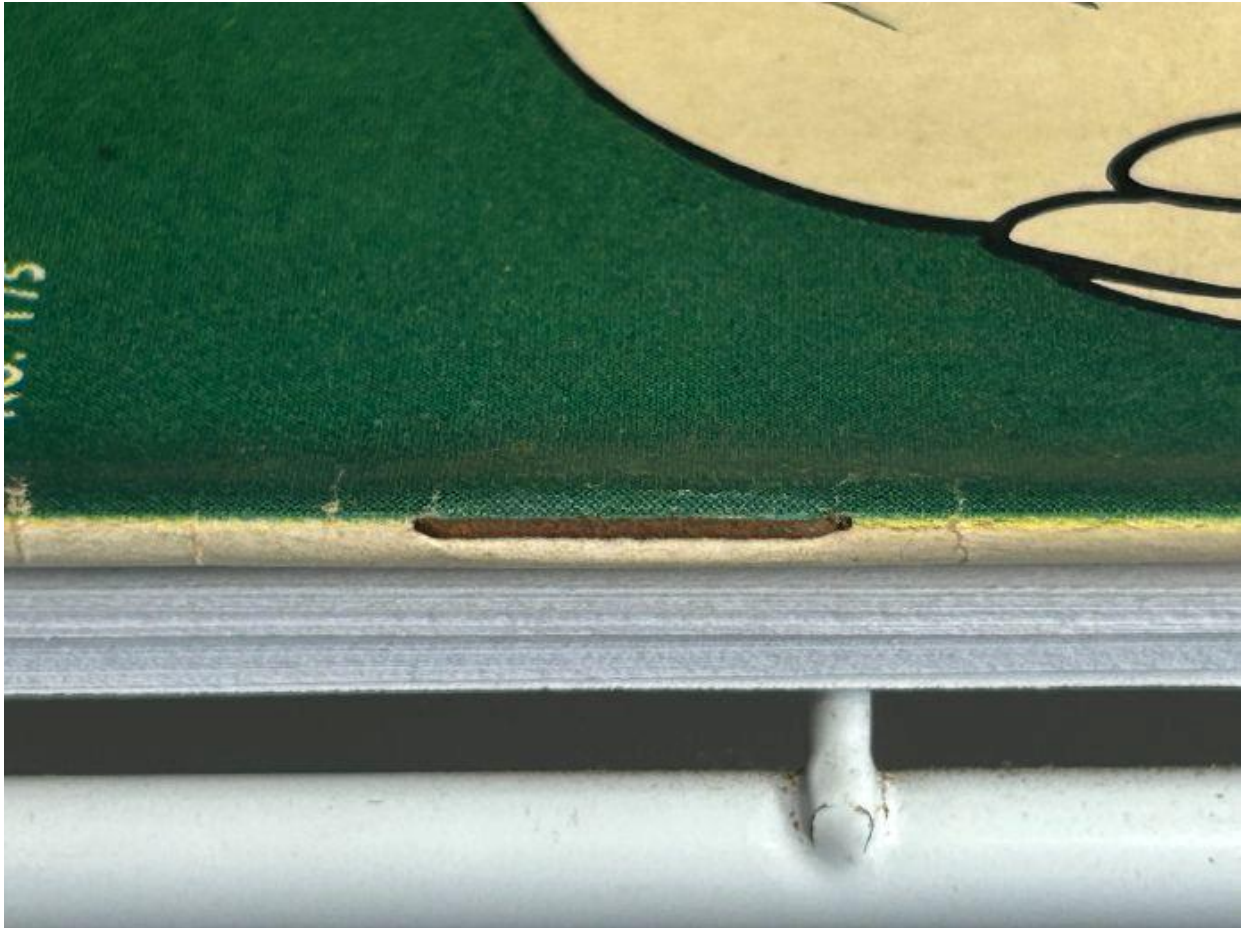
Spine shows **light cracking only**, with good structural integrity.

UPPER STAPLE — OBSERVATIONS

Walt Disney's Comics and Stories – Vol. 15 No. 7 (April 1953)

Photo Condition & Quality:

Macro image is sharp and evenly lit; staple and surrounding paper fully visible. Resolution sufficient to assess metal and paper interaction. View shows the upper staple.



Observations:

- Metal staple present and embedded.
- **Light surface oxidation** visible as mild darkening on the metal.
- Surrounding paper intact with no tearing or slot enlargement.

Overall Impression:

Upper staple is **structurally sound with surface-level oxidation only.**

LOWER STAPLE — OBSERVATIONS

Walt Disney's Comics and Stories – Vol. 15 No. 7 (April 1953)

Photo Condition & Quality:

Macro image is clear, evenly lit, and properly framed; staple area fully visible. View shows the lower staple.



Observations:

- Metal staple present and embedded.
- Oxidation similar in degree to the upper staple.
- No surrounding paper damage or slot enlargement observed.

Overall Impression:

Lower staple is **structurally sound with surface-level oxidation only.**

BRITTLENESS TEST — OBSERVATIONS

Walt Disney's Comics and Stories – Vol. 15 No. 7 (April 1953)

Photo Condition & Quality:

Image is adequately lit and focused; a single page corner is clearly isolated above flat underlying pages. Slight softness at the extreme tip does not impede evaluation.



Observations (confined to the lifted page):

- The lifted page bends upward in a **smooth, shallow arc**.
- No visible fiber fracture, splitting, or flaking along the bend line.
- Paper surface appears continuous at the point of flex.

Overall Impression:

The tested page demonstrates **retained flexibility** and does **not exhibit brittle behavior** under the observed flex.